



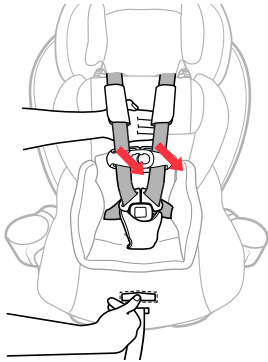
⚠️ WARNING: Avoid serious injury or death to your child. Never use your Fit4 Child Restraint without the softgoods in place. You must read and understand the Softgoods Removal instructions and the instructions in the User Guide. If you do not understand these instructions, **DO NOT** attempt to remove the softgoods, **STOP** and call Chicco at 1-877-424-4226.

SS0020E_02

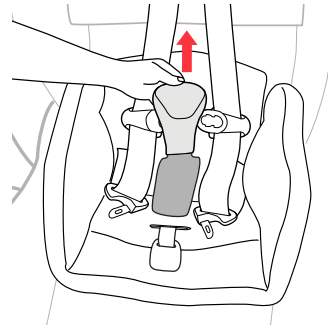
INSTRUCTIONS: Fit4 Softgoods Removal/Installation

IMPORTANT: Please also refer to the instructions that came with your product.

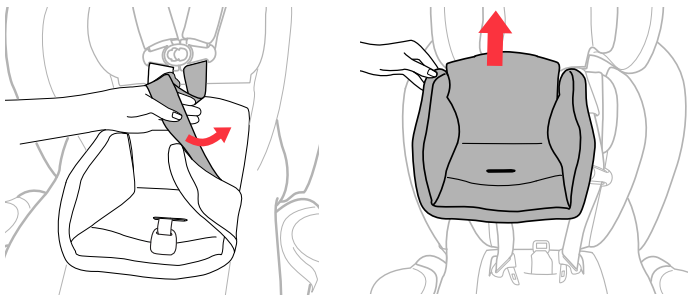
SOFTGOODS REMOVAL Stage 1:



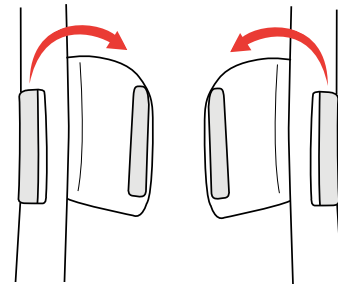
1 Completely loosen Harness by pressing Harness Release Button on the front of the Child Restraint and pulling out on both of the Harness Straps. Then unbuckle the Chest Clip and Harness Buckle.



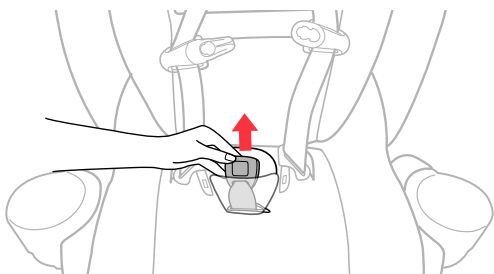
2 Remove the Crotch Strap Pad by pulling the Crotch Strap Pad up and off the Harness Buckle, as shown.



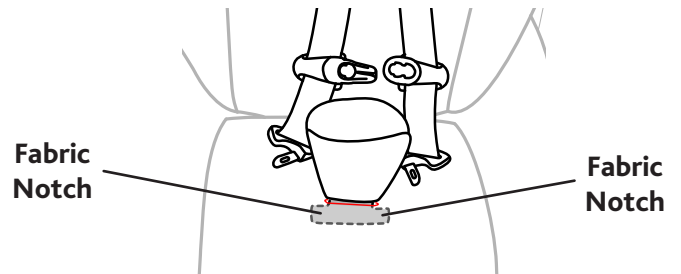
3 Remove the Stage 1 Positioner by pulling the Shoulder Straps out through the side openings on the pad and thread the Harness Buckle through the slot in the pad. Remove the Stage 1 Positioner from the Child Restraint.



4 If desired, Unhook the Hook and Loop Tab on the outside of the Shoulder Pad to remove the pad. Repeat for the other Shoulder Pad. **Note:** The Shoulder Pads may be used in Stages 1, 2, and 3.

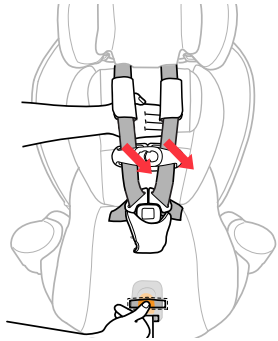


5 If desired, Reattach the Crotch Strap Pad and Shoulder Pads for Stage 2 use. Pull the Harness Buckle forward and insert the Crotch Strap Pad tongue down into the same opening as the Harness Buckle. The Crotch Strap Pad tongue will be behind the Harness Buckle. Thread the Harness Buckle up into the Crotch Strap Pad.

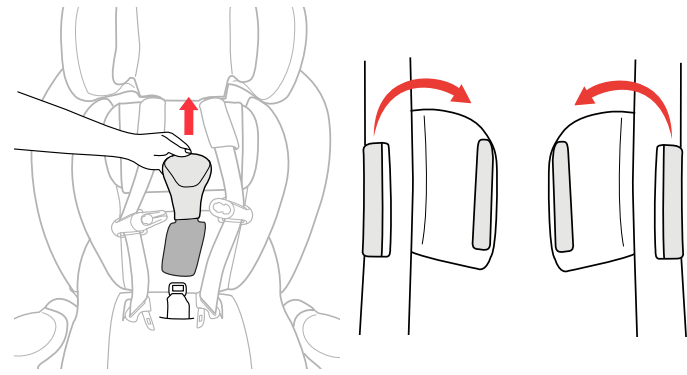


6 Be sure to adjust the Crotch Strap Pad so that the Fabric Notches are positioned below the slot in the top layer of padding. **Note:** The Crotch Strap Pad may be used in stages 1, 2, and 3.

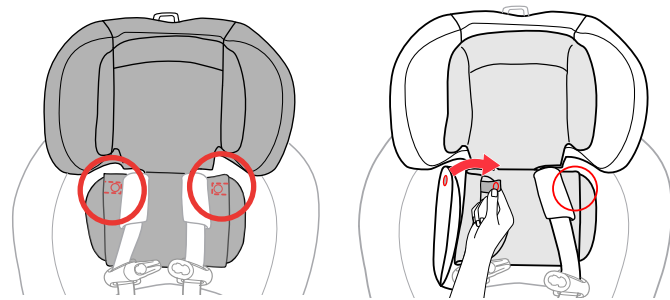
SOFTGOODS REMOVAL Stage 2:



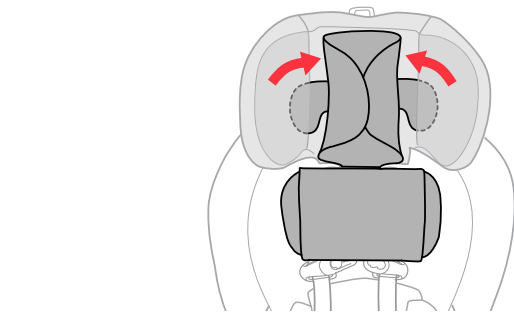
7 **Completely loosen Harness** by pressing Harness Release Button on the front of the Child Restraint and pulling out on both of the Harness Straps. Then unbuckle the Chest Clip and Harness Buckle.



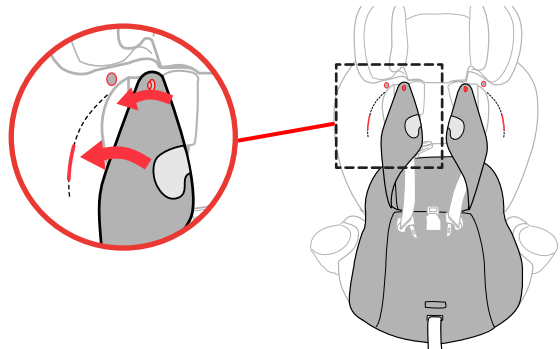
8 **Remove the Crotch Strap Pad** by pulling the Crotch Strap Pad up and off the Harness Buckle, as shown. Also remove the Shoulder Pads, if desired.



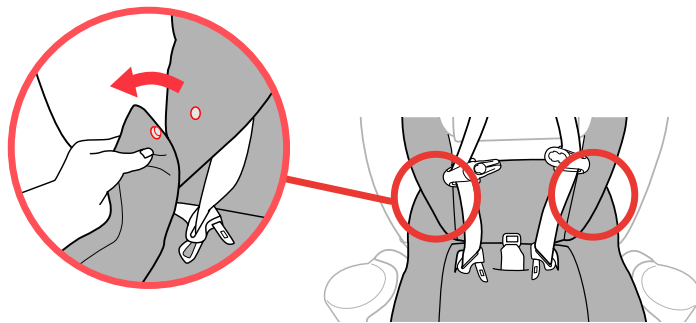
9 **Lift the Headrest to the highest position.** Unsnap both Snap Buttons located on the bottom section of the Stage 1 & 2 Headrest insert, as shown.



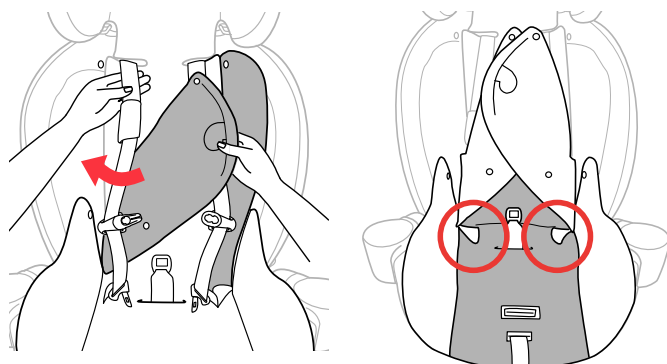
10 **Slide both Headrest Flaps** from the side pockets on the Headrest. Remove the Stage 1 & 2 Headrest Insert from the Child Restraint.



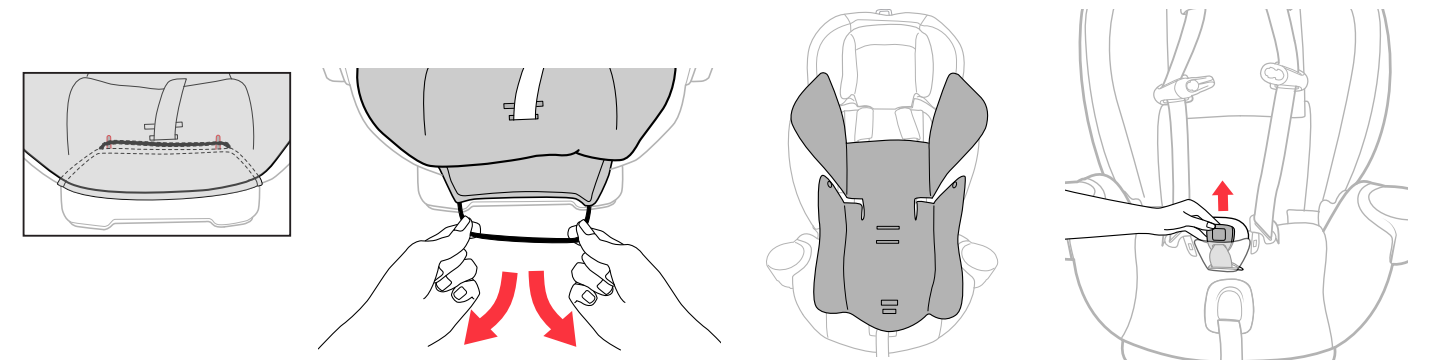
11 **Locate and undo the top snap button on the Stage 2 Positioner side wing.** Below the snap button, pull the plastic tab from the pocket. Repeat for the other side.



12 **Locate and undo both side snap buttons,** as shown.

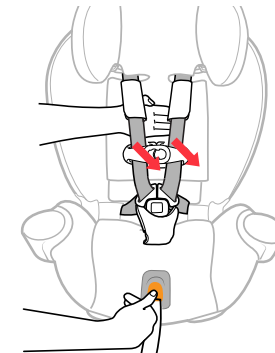


13 **Thread the Shoulder Straps out through the side openings** on the Stage 2 Positioner. Pull forward on the seat fabric and Stage 2 Positioner, as shown. Then reach under the seat bottom fabric and undo both Snap Buttons attaching the Stage 2 Positioner to the seat bottom fabric.

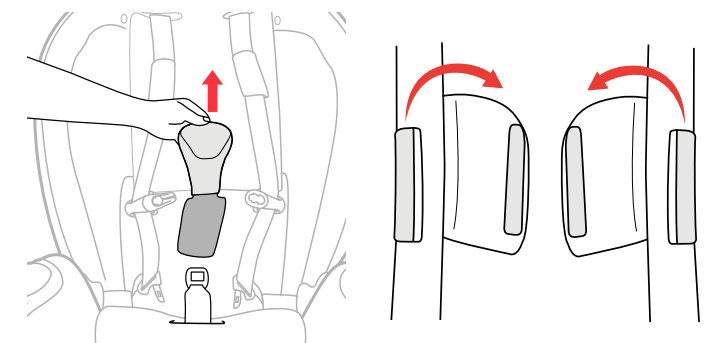


14 **Unhook the elastic loop below the front edge of the Child Restraint,** and thread the Harness Buckle down through the slot in the pad. Remove the Stage 2 Positioner from the Child Restraint. If desired, re-attach the Crotch Strap Pad and Shoulder Pads for Stage 3 use. Thread the Crotch Strap Pad tongue down into the same opening as the Harness Buckle (See Step 5 and 6 in Softgoods Removal Stage 1).

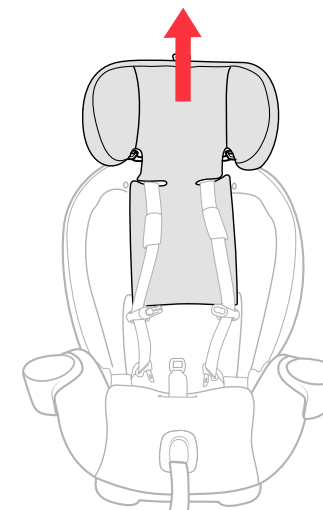
SOFTGOODS REMOVAL Stage 3 & 4:



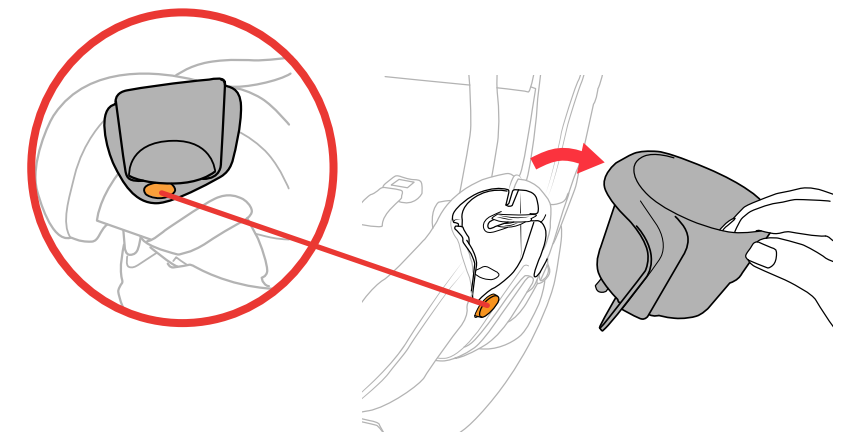
15 **Completely loosen Harness** by pressing Harness Release Button on the front of the Child Restraint and pulling out on both of the Harness Straps. Then unbuckle the Chest Clip and Harness Buckle.

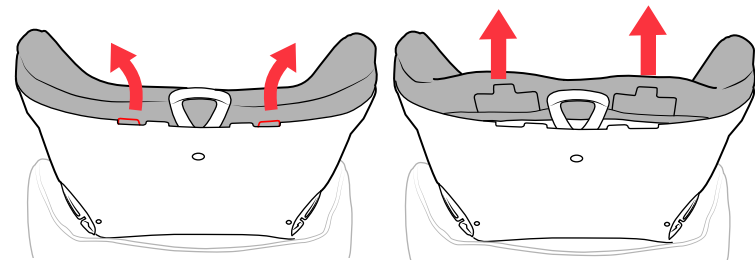


16 **Remove the Crotch Strap Pad** by pulling the Crotch Strap Pad up and off the Harness Buckle, as shown. Also remove the Shoulder Pads.

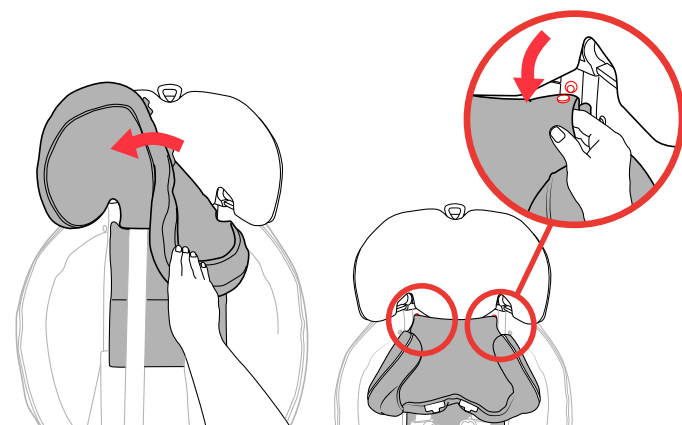


17 **Raise the headrest to the highest position** and remove BOTH of the Cup Holders. Press the orange button located on the bottom edge of the Cup Holder and lift up, repeat for the other side.

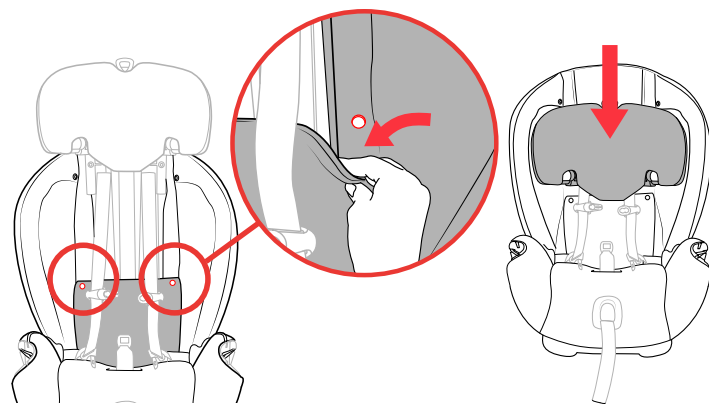




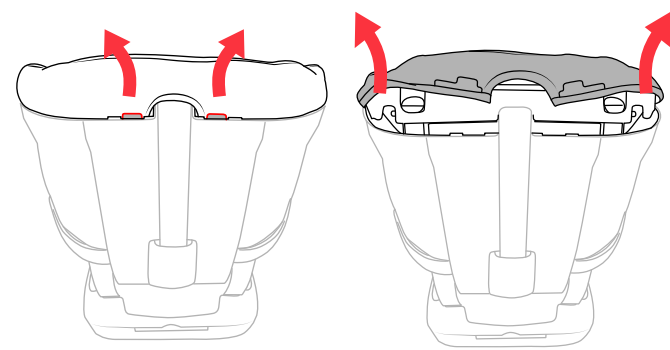
18 **At the back of the Headrest**, pull back gently on both of the plastic tabs at the top of the Headrest and pull up on the Headrest fabric.



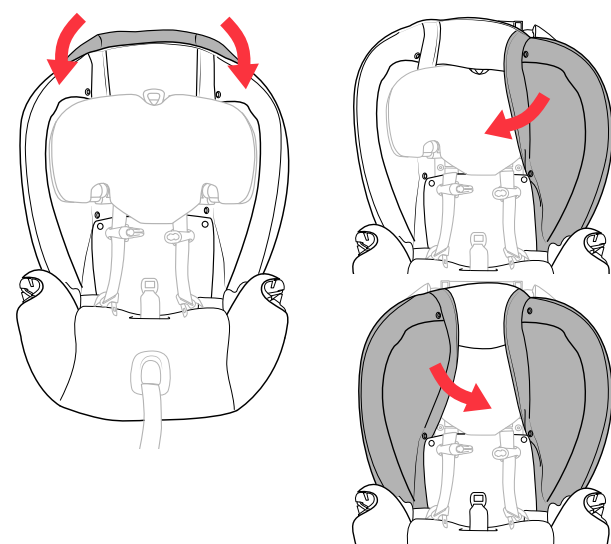
19 **With the Child Restraint facing you**, pull forward on the fabric and guide it off of the Headrest frame. Undo both snap buttons holding the headrest fabric in place at the bottom of the Headrest frame, as shown.



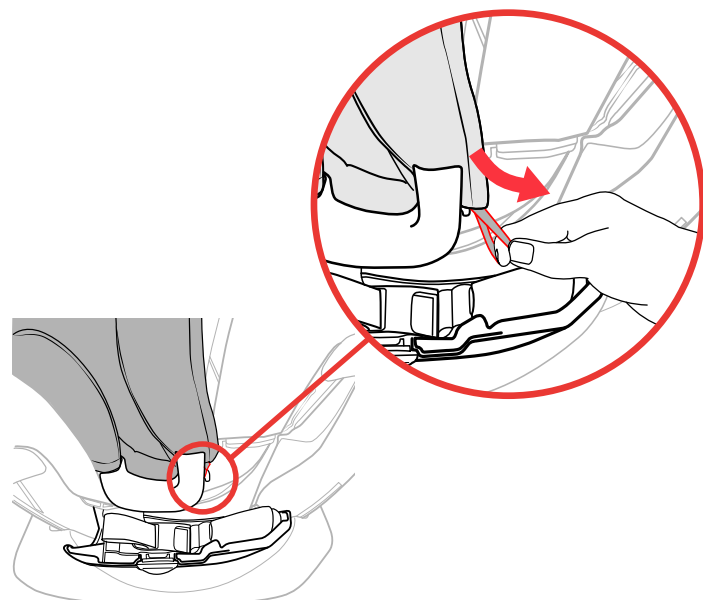
20 **Undo both snap buttons on the inside of the seat pad**, as shown. Then lower the Headrest to the lowest position.



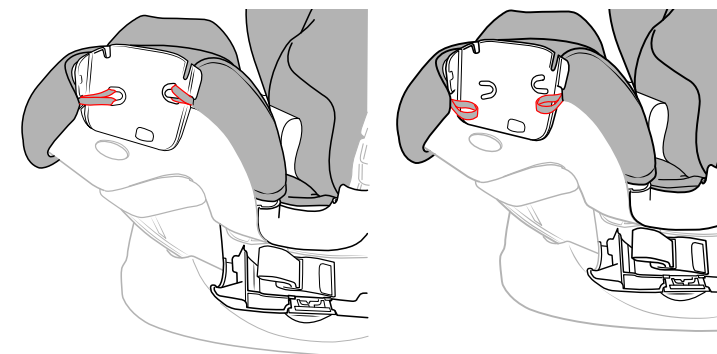
21 **At the top edge of the seat back**, pull back gently on both of the plastic tabs and lift up fabric. Remove the fabric from the top edge of the seat back.



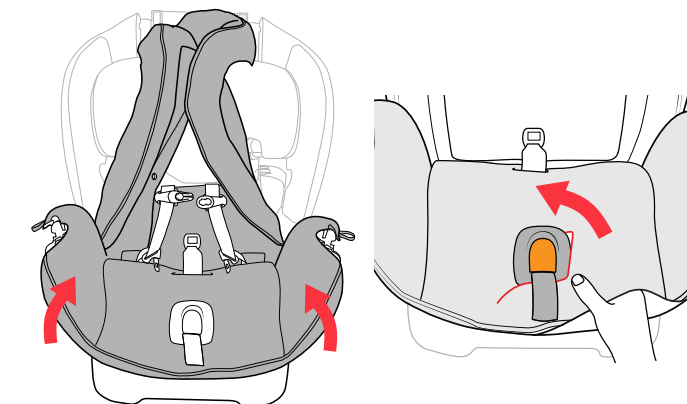
22 **With the Child Restraint facing you**, pull forward on the fabric. Guide it off of the Child Restraint Seat frame and then around the Headrest frame.



23 **On one side of the Child Restraint open the LATCH Storage compartment**. Locate and unhook the elastic loop, as shown. Pull the fabric edge out and around the orange Lap Belt guide.



24 **Release both elastic straps** located inside the cup holder attachment cutout. Repeat steps 24 and 25 for the other side.



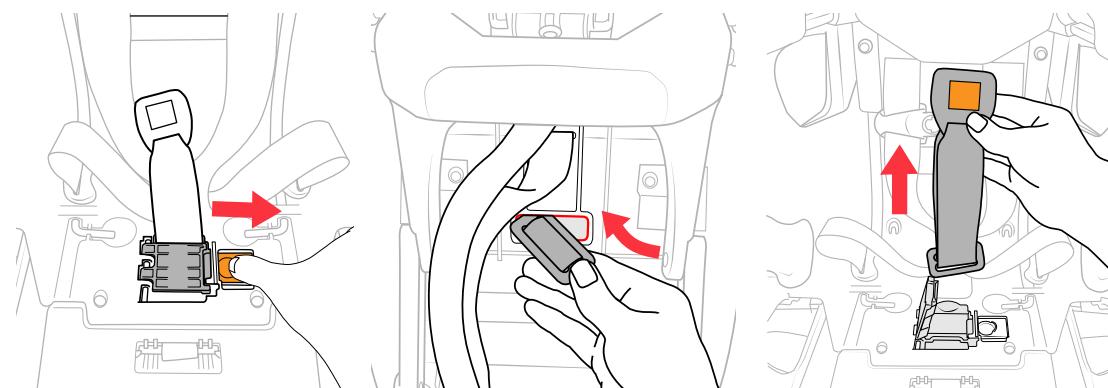
25 **Thread the Harness Buckle down** through the slot in the pad and pull the **FABRIC** up around the front and sides of the seat frame. Then carefully pull fabric around the Harness Adjuster Strap Cover and remove the Seat Bottom Pad. The plastic Harness Adjuster Strap Cover is **NOT** removable. Remove the Fabric.

Cleaning Instructions:

Fabrics may be hand washed using mild soap and water, or machine washed in cold water on delicate cycle using mild detergent. Hang to dry. **DO NOT BLEACH**. Please consult your product manual for additional care and maintenance instructions.

DO NOT remove the Harness Straps. Contact Chicco Customer Service at **1-877-424-4226** for assistance or additional information.

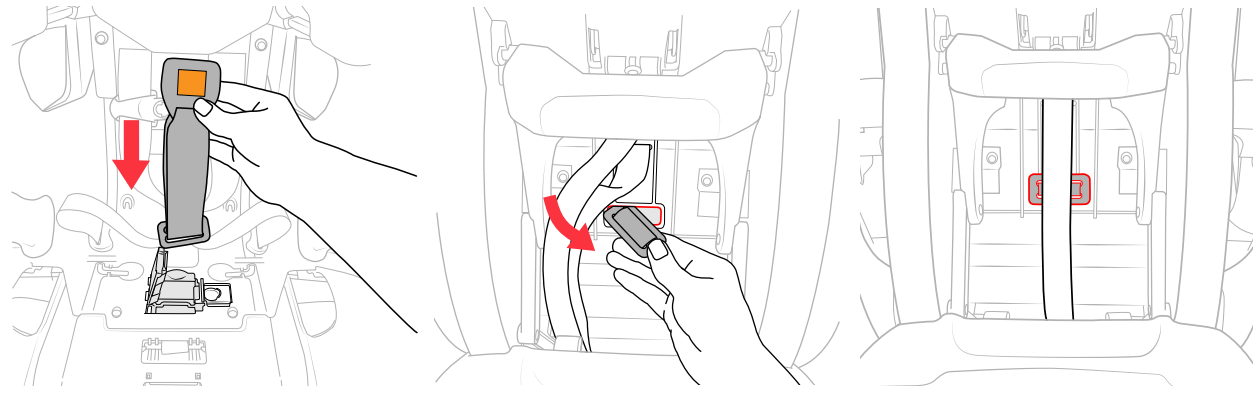
CROTCH STRAP REMOVAL:



26 **Open the Crotch Strap Lock and fully recline the seat (Position 1)**. Tilt the Child Restraint back and locate the crotch strap metal bar underneath the seat. Turn metal bar slightly and push the corner through the slot. Work the metal bar through the slot while pulling Harness Buckle out on the other side.

NEVER use Child Restraint without the Crotch Strap installed.

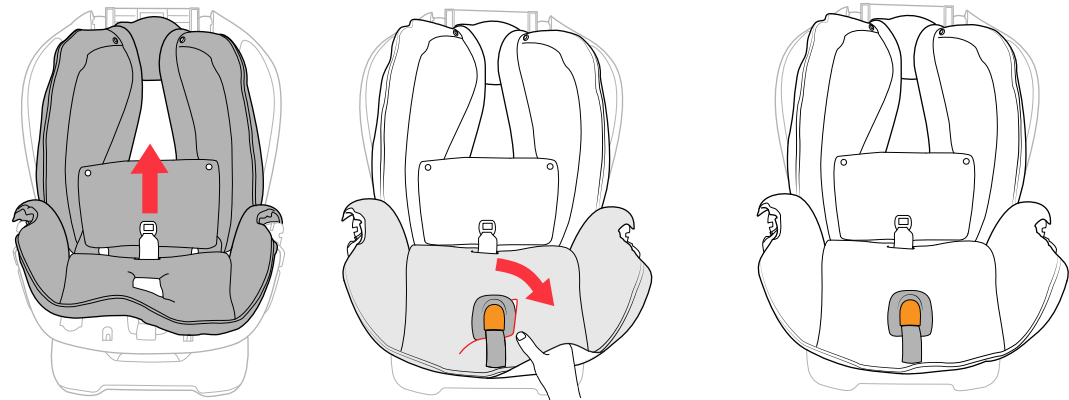
CROTCH STRAP INSTALLATION:



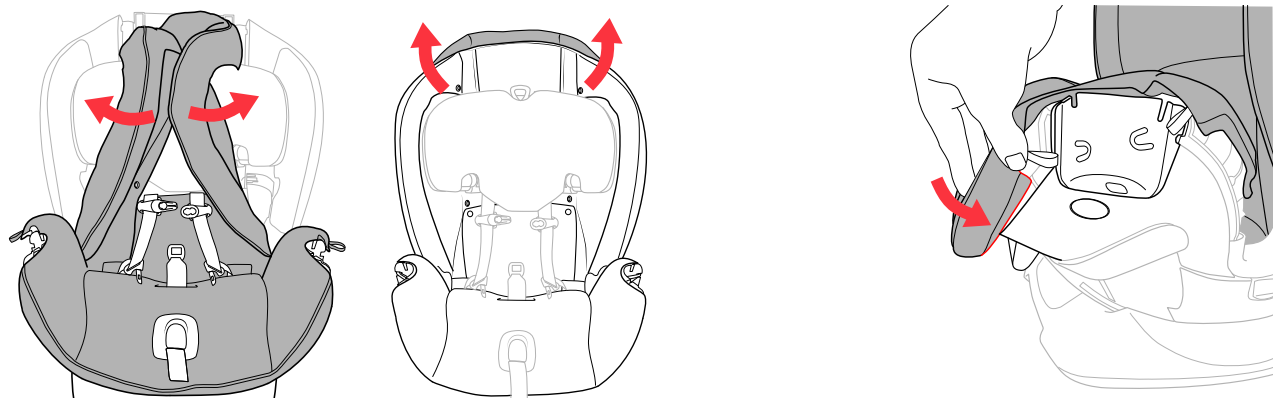
27 Guide one corner of the metal bar through slot in the Crotch Strap Lock compartment. With the seat fully reclined (Position 1), pull the metal bar through the slot from underneath the seat. Make sure the metal bar lays flat on the bottom of the seat, as shown.

NEVER use Child Restraint without the Crotch Strap installed.

SOFTGOODS INSTALL Stage 3 & 4:

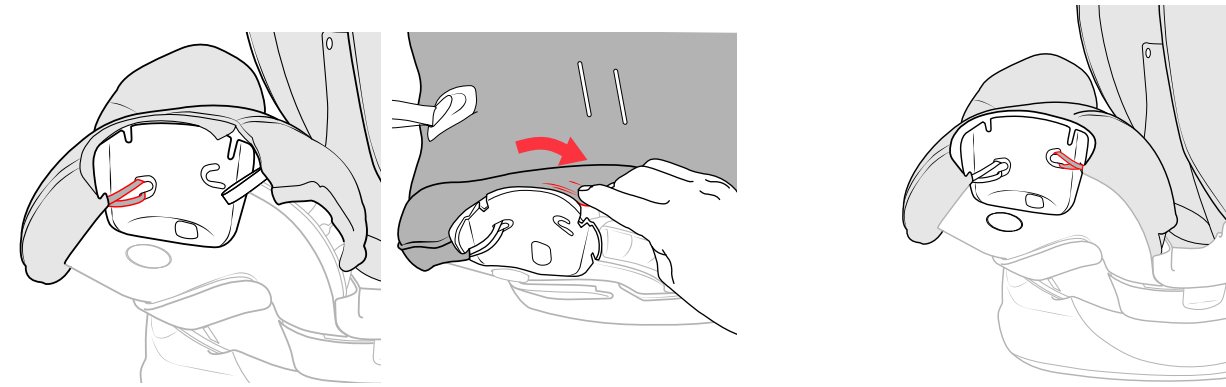


1 Make sure the Headrest is in the lowest position and open the LATCH storage compartments. Place the Seat Pad onto the Child Restraint frame and thread the Harness Buckle up through the correct slot in the seat pad. Then carefully guide the fabric around the Harness Adjuster Strap Cover.



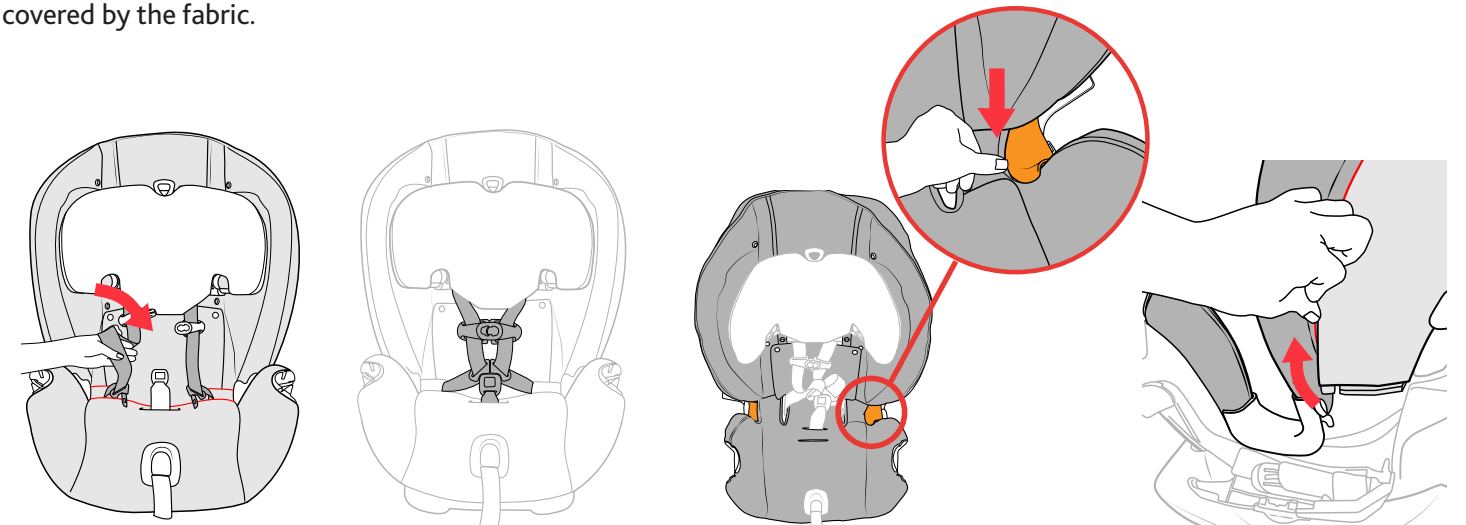
2 Pull the fabric down and around the front edge and insert the headrest into the top opening in the fabric. Pull the fabric around the back of the Seat Frame.

3 At the front of the Child Restraint start tucking the fabric edge into the outside groove following it up the side to the Cup Holder attachment.



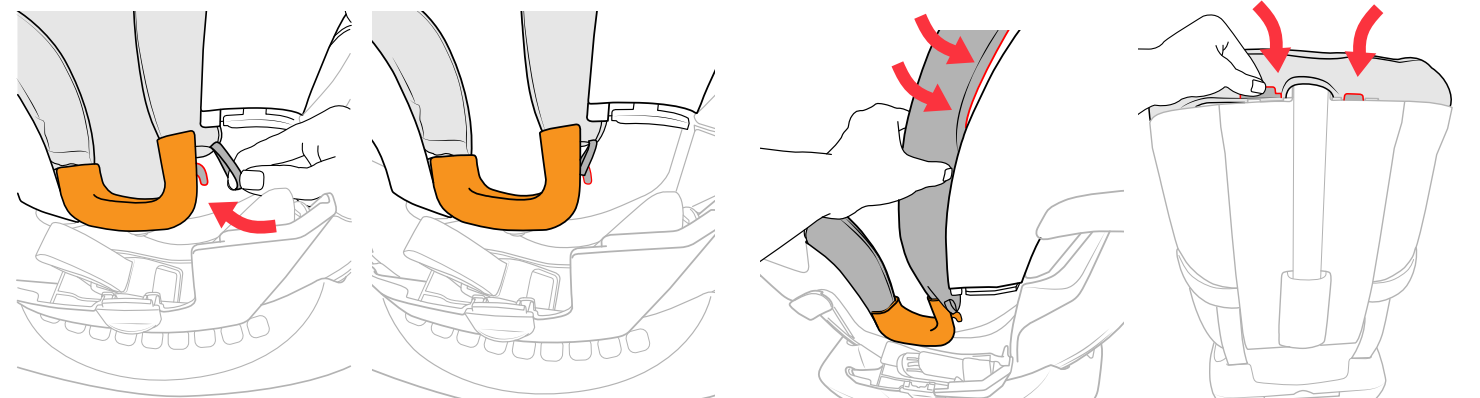
4 While pulling on the Front elastic strap, press in on the fabric guiding it into the groove. Wrap the elastic strap around the post inside the Cup Holder cutout. Tuck the fabric edge around the outside Cup Holder frame, making sure the grooves in the Cup Holder frame are not covered by the fabric.

5 Pull on the other elastic strap while guiding the fabric down and around the Cup Holder edge and into the notch. Wrap the elastic strap around the post and repeat for the other side.



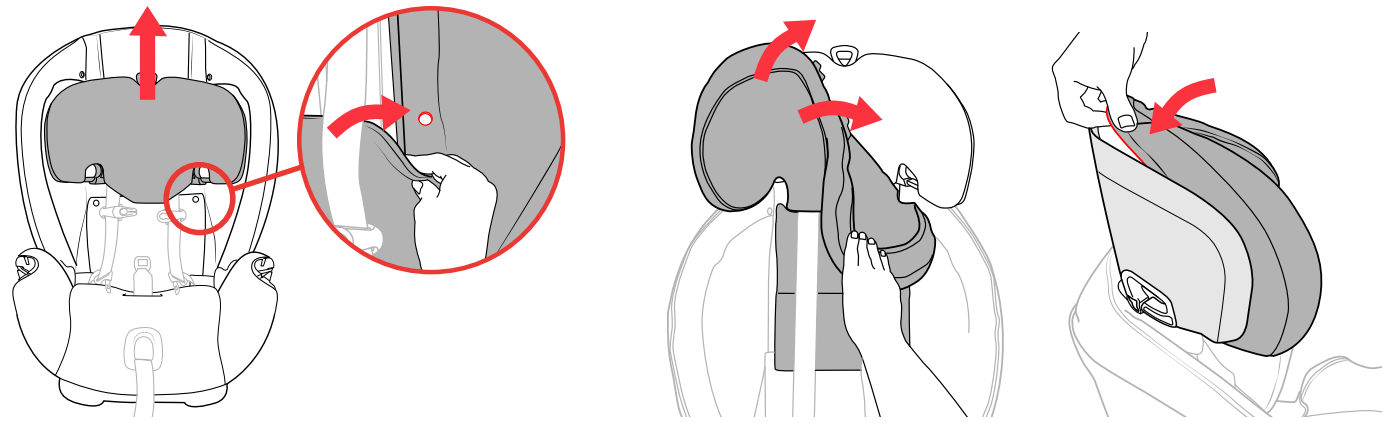
6 Pull the Shoulder Harness Straps through the openings in the fabric and attach the chest clip and the harness buckle.

7 Press and push the fabric around the inside edge of the orange Lap Belt Guide. If this becomes difficult, the blunt end of a pen or something similar may be used to help tuck the fabric around the edge.

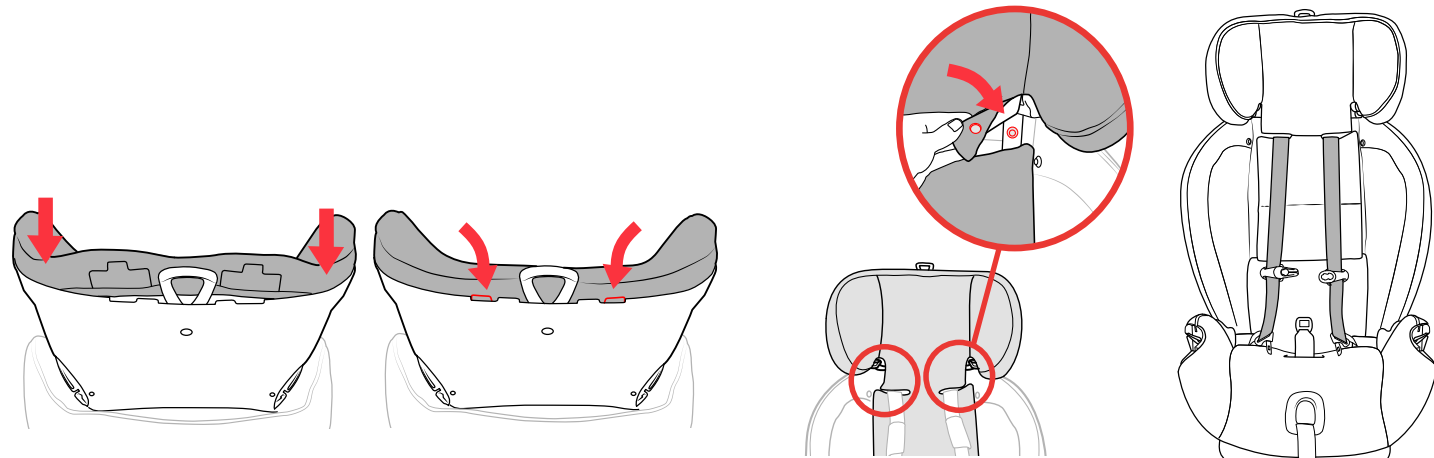


8 Locate the elastic strap near the back of the Lap Belt Guide, pull on the strap and tuck the fabric around the upper edge of the Lap Belt Guide. Wrap the elastic strap around the post inside the LATCH belt compartment. Close the compartment and repeat for the other side.

9 Tuck and press the fabric into both side edges of the Child Restraint. At the top of edge of the Child Restraint, locate the plastic tabs. Press both tabs into the top edge until they stay in position under the tab cutouts.

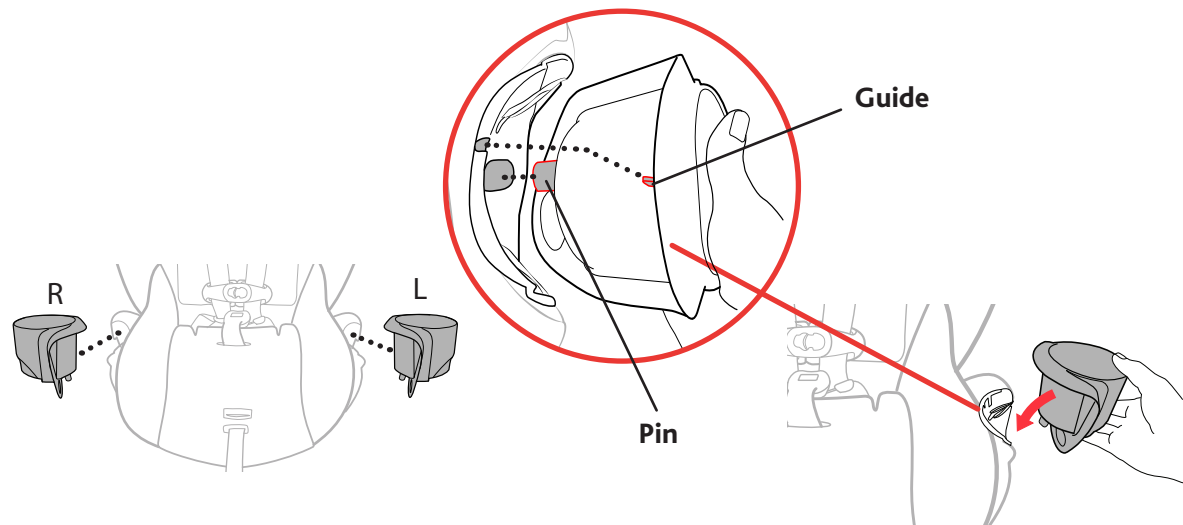


10 Attach both snap buttons on the seat fabric, as shown. Pull the Headrest up to the highest position. Slide the Headrest fabric onto and around both sides of the Headrest frame. Tuck the fabric edges into the Headrest frame edges, as shown.

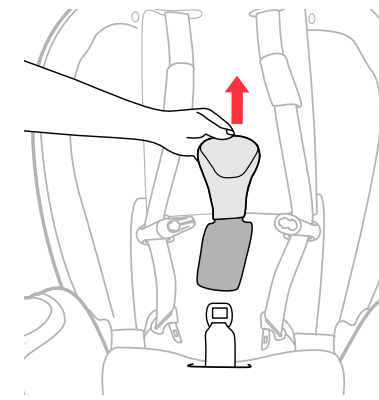


11 At the back edge of the Headrest locate the plastic tabs. Press them into the headrest frame until they click into position, as shown.

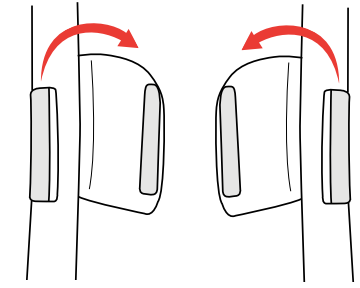
12 Attach both snap buttons on the Headrest fabric to the Headrest frame, as shown. If setting up for use in Stage 4, please reference pages 112 to 117 in your user guide. If not, pull the Shoulder Harness straps around to lay on top of the Headrest fabric.



13 Attach the Cup holders to the Child Restraint. Match the "R" and "L" Cup Holders to the Child Restraint, as shown. Make sure the fabric is tucked in along the Child Restraint lip to allow the Cup Holder to be attached properly. Line up the Cup Holder pin and the two guides with the openings on the Child Restraint, as shown. Push in and then push down on the Cup Holder until it clicks into place. Repeat for the other side.

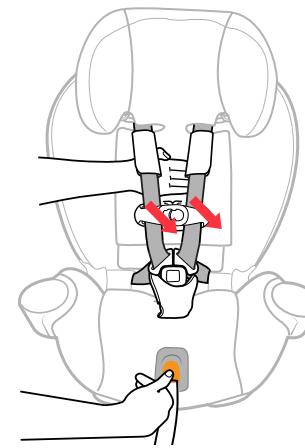


14 If desired, attach the Crotch Strap Pad for Stage 3 & 4 use. Thread the Crotch Strap Pad tongue down into the same opening as the Harness Buckle (See Step 5 and 6 in Softgoods Removal Stage 1).

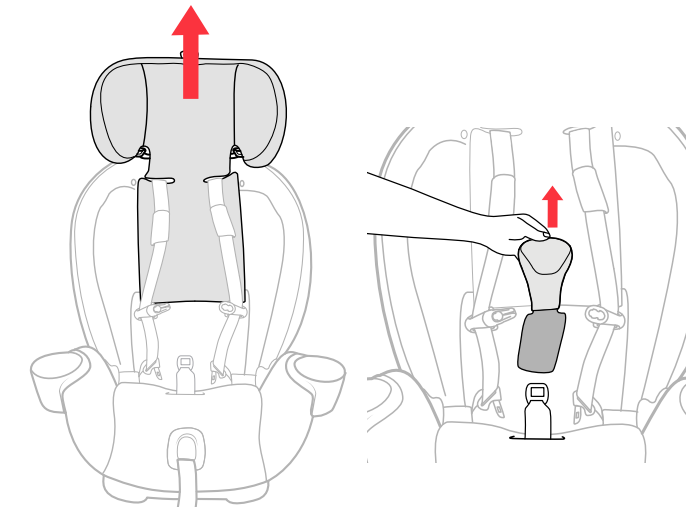


15 If desired, attach both sides of the Hook and Loop Tabs on the outside of the Shoulder Pad, as shown. Repeat for the other Shoulder Pad.

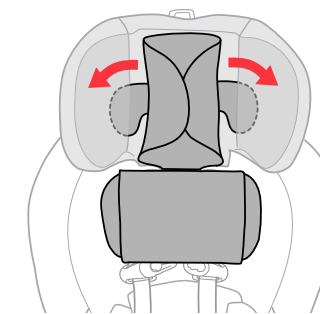
SOFTGOODS INSTALL Stage 2:



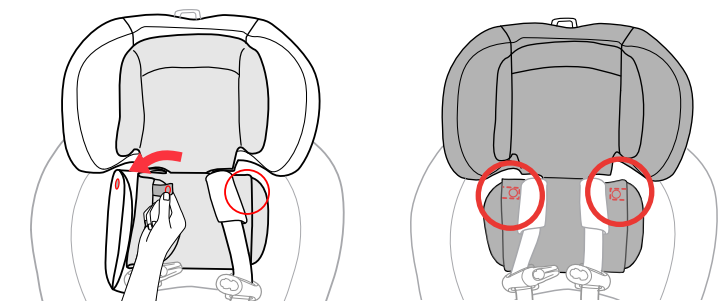
16 Completely loosen Harness by pressing Harness Release Button on the front of the Child Restraint and pulling out on both of the Harness Straps. Then unbuckle the Chest Clip and Harness Buckle.



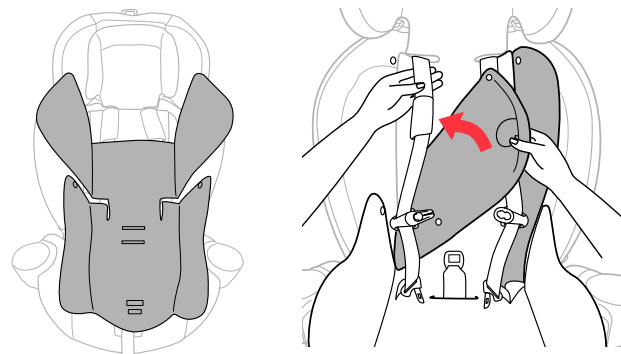
17 Raise the headrest to the highest position and remove Crotch Strap Pad.



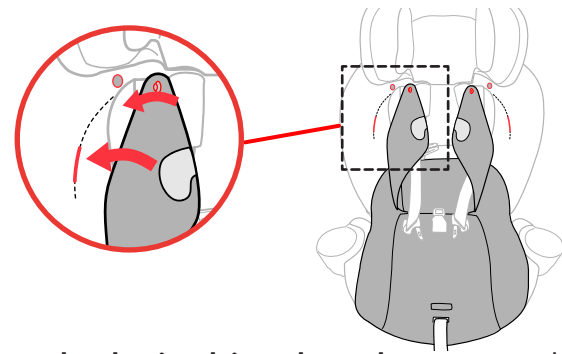
18 Slide both Headrest Flaps into the side pockets on the Headrest.



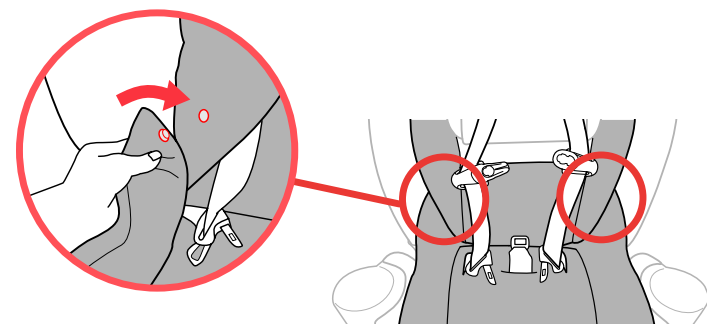
19 Slide Shoulder Straps into Headrest Slots, then attach both snap buttons located on the bottom section of the Stage 1 & 2 Headrest Insert, as shown.



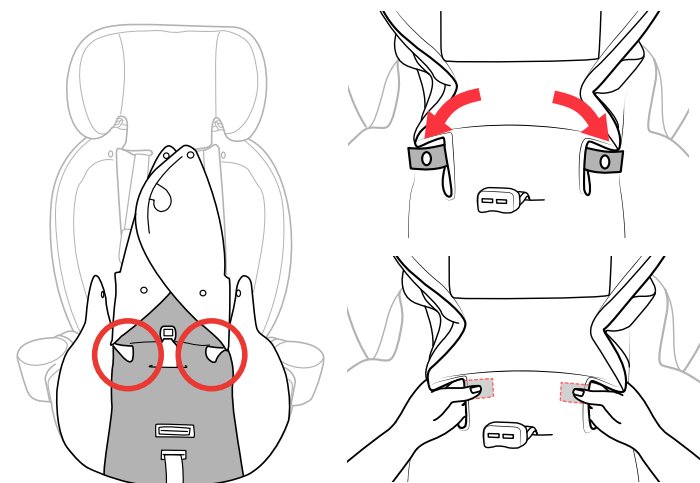
20 Place the Stage 2 Positioner on the Child Restraint. Thread the Harness Buckle up through the correct slot in the seat pad and pull the Shoulder Straps over the Stage 2 Positioner and into the side openings in the seat pad.



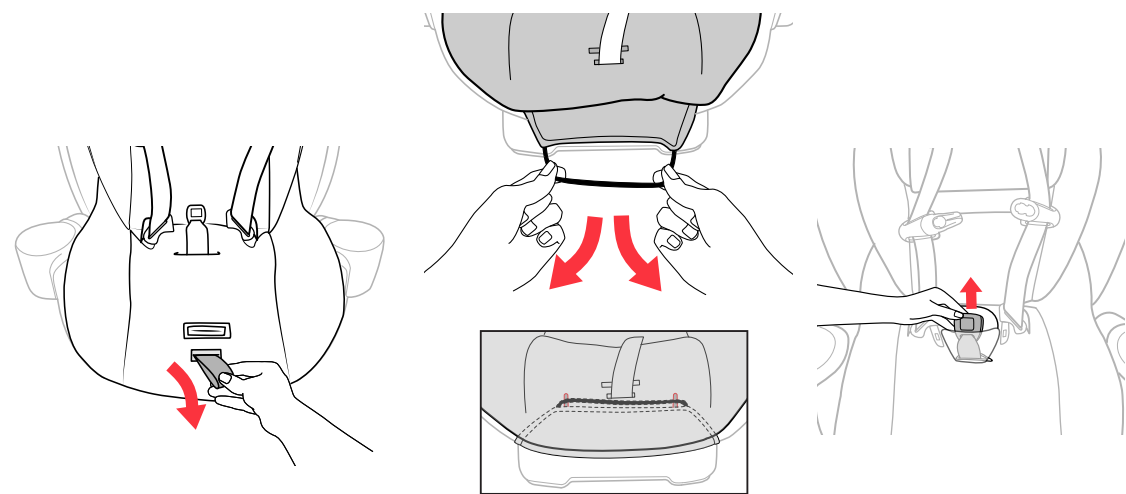
21 Insert the plastic tab into the pocket crease, and attach the top snap button on the Stage 2 Positioner side wing. Repeat for the other side. Double check to make sure the plastic tab is pushed all of the way down into the pocket.



22 Attach both side snap buttons, as shown.

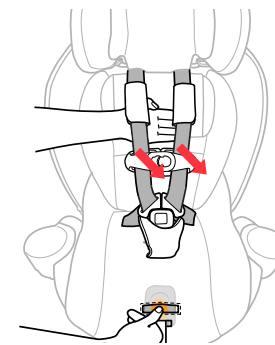


23 Pull forward on the seat fabric and Stage 2 Positioner, as shown. Wrap both snap button straps down and under the seat fabric. Using your fingers, line up and attach both snap buttons to the underside of the seat fabric.

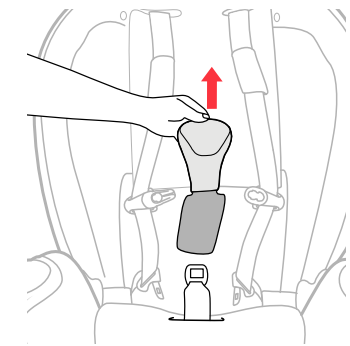


24 Locate and pull the adjuster strap through the opening on the seat pad. Attach the elastic strap on the front of the Stage 2 Positioner by pulling the elastic strap under the front edge of the seat bottom and loop it around both hooks. If desired, re-attach the Crotch Strap Pad for Stage 2 use.

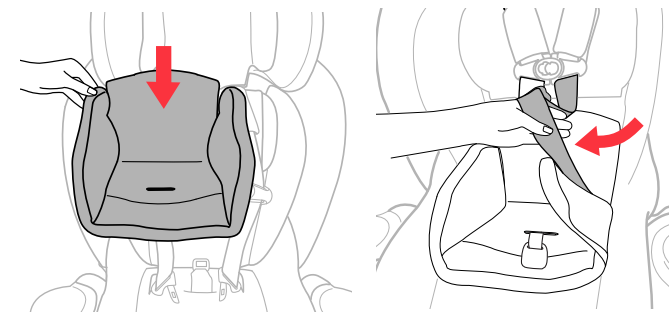
SOFTGOODS INSTALL Stage 1:



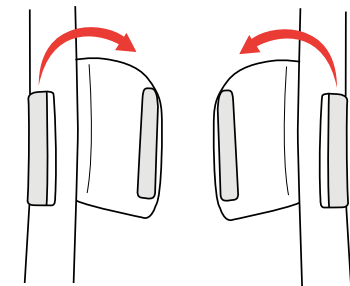
25 Completely loosen Harness by pressing Harness Release Button on the front of the Child Restraint and pulling out on both of the Harness Straps. Then unbuckle the Chest Clip and Harness Buckle.



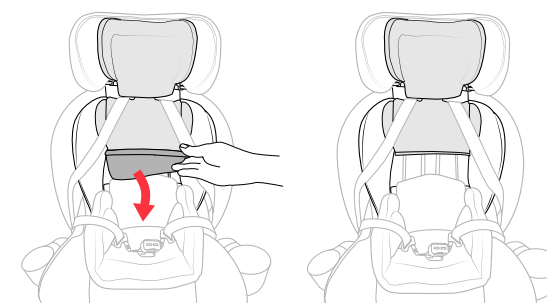
26 Remove the Crotch Strap Pad by pulling the Crotch Strap Pad up and off the Harness Buckle, as shown. Lower the Headrest to the lowest position.



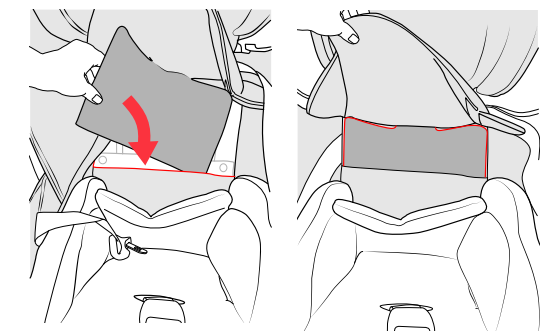
27 Place the Stage 1 Positioner on the Child Restraint. Thread the Shoulder Straps into the side openings on the positioner pad and thread the Harness Buckle up into the correct slot in the pad.



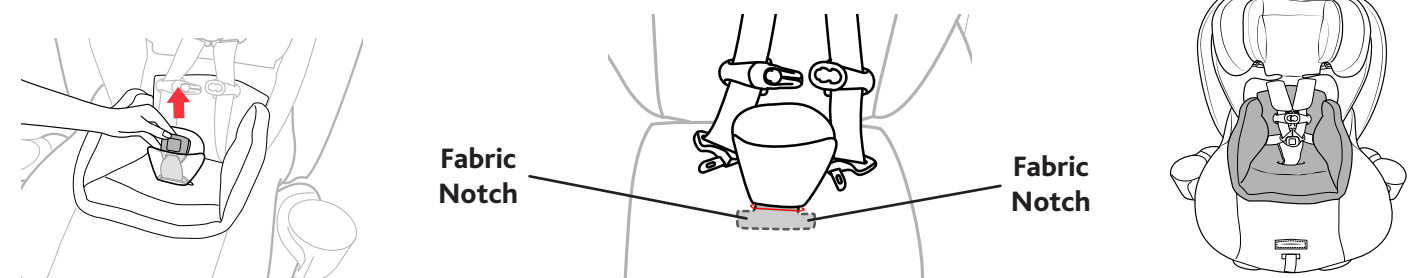
28 Attach both the Shoulder Pads to the Shoulder Harness straps using the Hook and Loop Tabs, as shown.



29 Before lowering the Headrest to the lowest position, lift up on the bottom edge of the Headrest Insert. Locate the lower portion of the Headrest Pad and fold it under.



30 Tuck the bottom Headrest Pad behind the Stage 2 Positioner pad, but in front of the Stage 3 & 4 seat pad, as shown.



31 Attach the Crotch Strap Pad. Make sure to adjust the Crotch Strap Pad so that the Fabric Notches are positioned below the slot in the top layer of padding.