

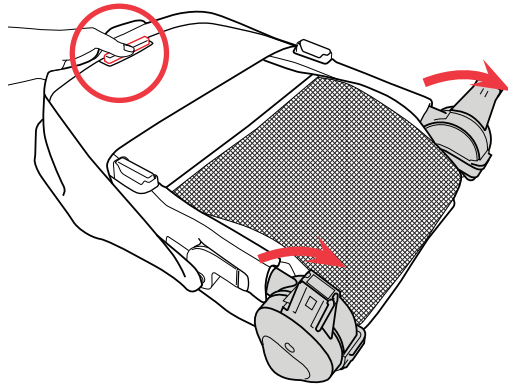


# INSTRUCTIONS: Corso® Flex Modular Seat

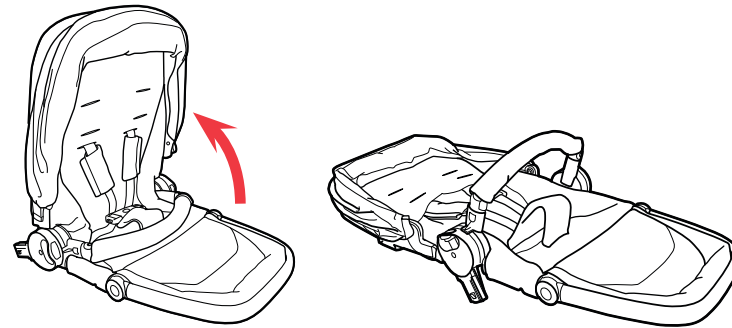
IMPORTANT: Please also refer to the instructions that came with your product.

**⚠ WARNING:** Avoid serious injury or death to your child. You must read and understand the Corso Flex Modular Seat Feature instructions and the instructions in the User Guide. If you do not understand these instructions, **STOP** and call Chicco at 1-877-424-4226.

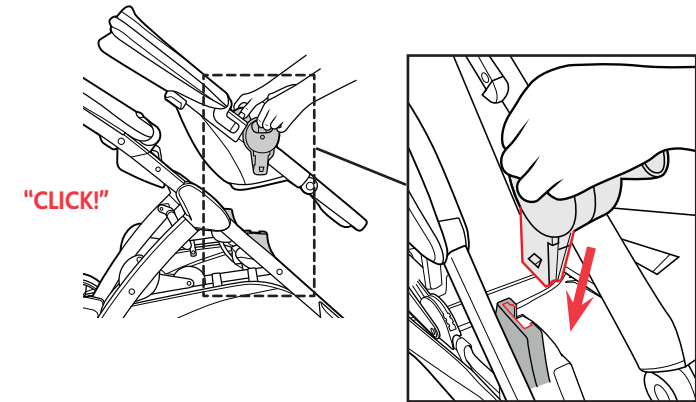
SS0039E\_03



**1 Prepare Modular Seat for attachment to Stroller Frame.** Make sure the hub posts are both in the same position, as shown. If not, squeeze the recline handle with one hand and rotate the hub post with the other.



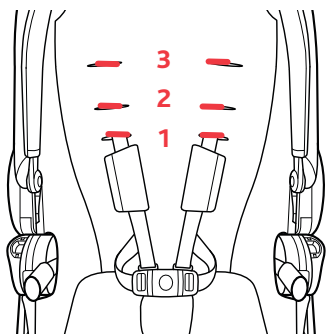
**2 Open the Seat Frame.**



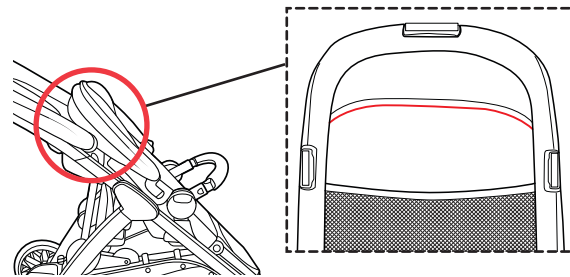
**3 Line up and insert the attachment hubs on both sides of the Seat Frame** into the attachment slots on the Stroller Frame, as shown. Pull up on the Seat Frame to make sure it is securely attached to the Stroller Frame.

## ⚠ WARNING

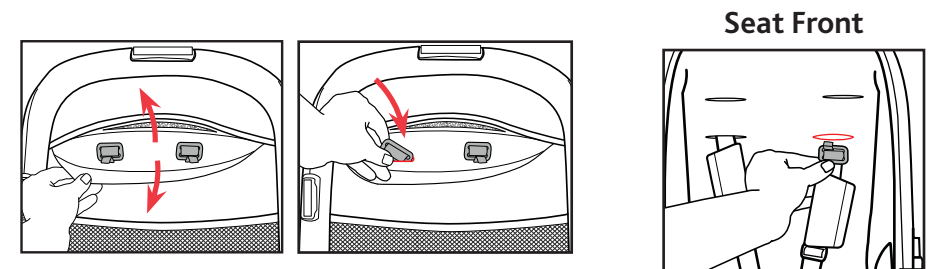
This stroller features three harness positions. Always use a harness position located ABOVE the child's shoulder line. If multiple harness positions are above the child's shoulder line, use the one closest to it.



**4 The Shoulder Straps** can be adjusted to 3 height positions as shown.

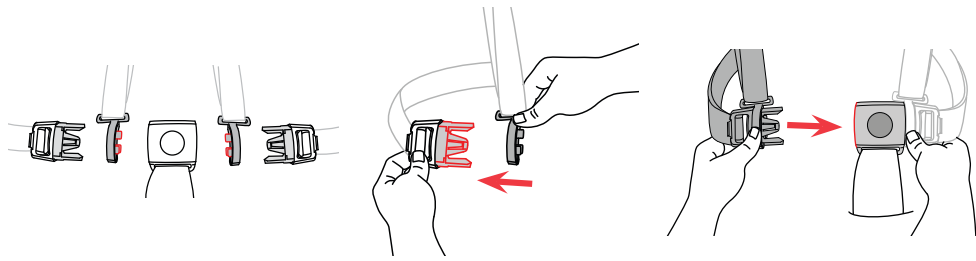


**5 To adjust the Shoulder Harness to another height position,** locate the D-ring on the back of the seat as shown.



**6 Release the hook and loop material at the top of the seat back to expose the seat board.** Slide the D-ring through opening on the seat back. Then pull through the opening on the seat pad. Re-insert the D-ring into the correct height position, and repeat for the other side.

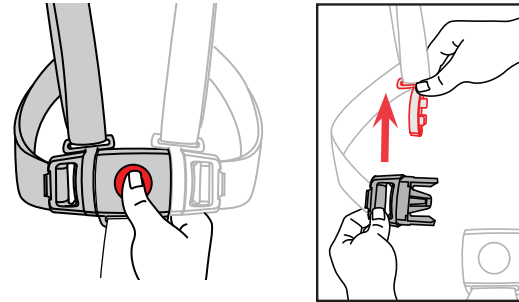
Always use the same height position for both straps. Depending on Shoulder Harness height position, D-ring may be located below visible opening in seat back.



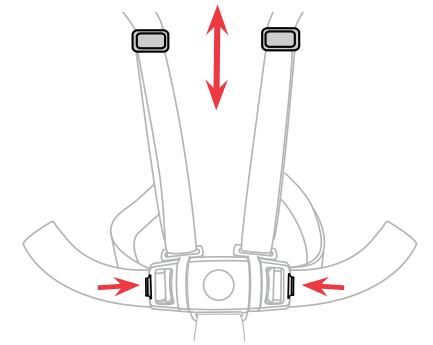
**7** This stroller has a 5-point safety harness. The Shoulder Strap Connector is designed to break away from the Waist Clip when not secured in the Crotch Strap Buckle. Make sure the Shoulder Strap Connector is in the correct position, as shown. Slide the Shoulder Strap Connector onto the Waist Strap Clip and repeat for the other side. Then slide both Waist Clips into the Crotch Strap Buckle, as shown. Pull on both sides to make sure the Clips are secured to the Buckle.

## ⚠ WARNING

Never leave child unattended. Avoid serious injury from falling or sliding out. Always use Safety Harness.

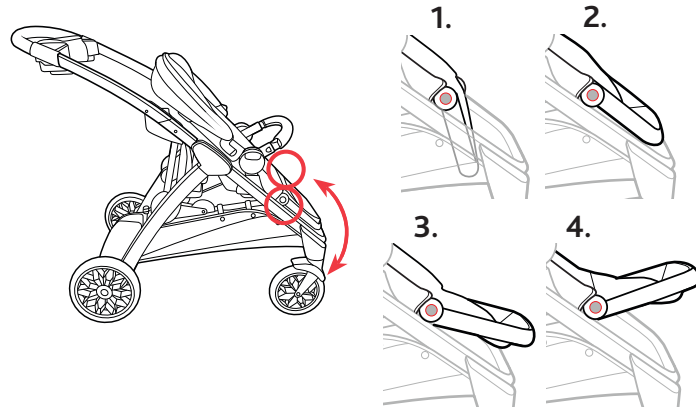


**8** The Safety Harness can be released by pressing the button on the center of the Buckle and pulling both Waist Clips out. Pull up on the Shoulder Strap Connector to remove it from the Waist Strap Clip.

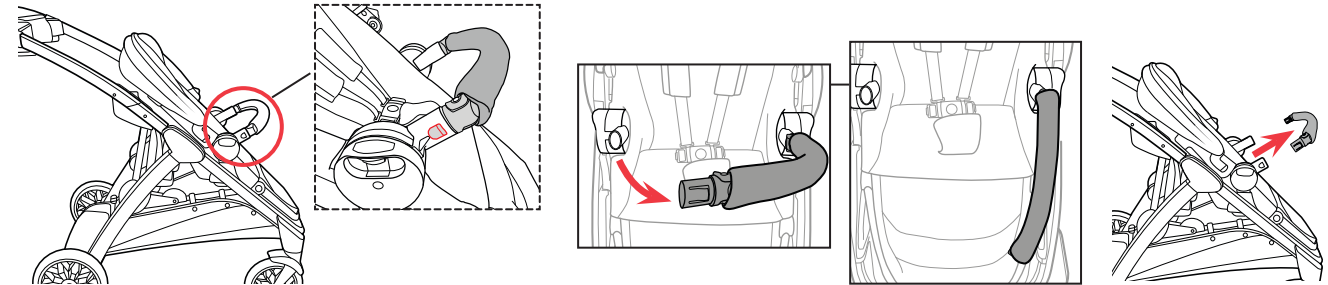


**9** The length of the Shoulder Straps can be adjusted by pulling on the adjustment buckles to tighten or loosen. The length of the waist straps can be adjusted. Press the tab at the end of the Waist Strap Clip and pull on the strap to tighten or loosen, to better fit your child.

Refer to the Stroller Owner's Manual for instructions on use of the Canopy, Footrest, Armbar, and Organizer Pocket.



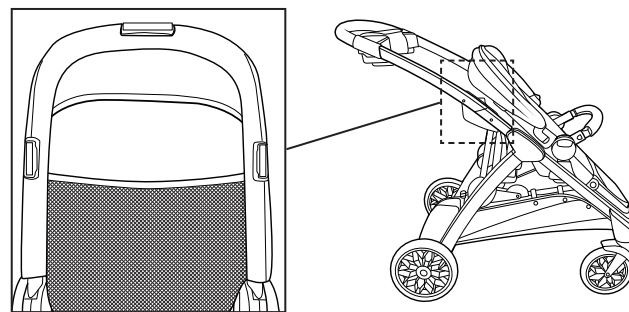
**10** The Footrest can be adjusted to 4 positions. Press in on both Footrest Buttons and, at the same time, rotate the Footrest up or down to the desired position.



**11** To remove Armbar, press in on the buttons located at the sides of the Armbar, as shown. Undo one side of the Armbar, and swing away to the side. Undo both sides and remove completely. To re-attach the Armbar insert the Armbar Tongues into the corresponding openings on the Seat Frame.

## ⚠ WARNING

Never place more than 1 lb (0.5 kg) in seat back pocket.



**12** Locate the mesh organizer pocket on the back of the seat.